



**Danish Interpretation Systems**

Top Level Conference Solutions



## About DIS

DIS, Danish Interpretation Systems is one of the world's leading brands of advanced conference electronics. DIS provides complete system solutions of advanced electronic conference and conference products to the global meeting industry on a permanent or rental supply basis.

Conference Microphone and Discussion Systems, Simultaneous Interpretation and Translation Systems, Language Distribution Systems, Conference Voting and Audience Response Systems. DIS is engaged in product development, manufacturing and worldwide sales and has 50 years of experience in serving global clients in the meeting and communication industry. The DIS products today are the result of decades of accumulated know-how combined with the usage of the latest available analogue and digital technologies. DIS is a subsidiary of the Danish company Informationsteknik Scandinavia Group and is represented through a global partner network in more than 50 countries. DIS Offices are to be found in Copenhagen, Aarhus, Malmö, Stockholm, Oslo, Bangkok and Dubai.

**For more information visit [www.dis.cc](http://www.dis.cc)**

For many years DIS has delivered conference and simultaneous interpretation systems to parliaments, county chambers, town halls, national banks, universities, and international organisations such as NATO, UN, WHO, and IMF in addition to conference centres and hotels all over the world. Our reference list includes some of

the most prestigious installations throughout the world.

**DCS 6000 series have been installed worldwide in e.g.**

Brussels, Belgium  
Dublin, Ireland  
Seoul, Korea  
Bucharest, Romania

Stockholm, Sweden  
Washington DC, USA  
Hanoi, Vietnam

**Also many rental companies throughout the world use the DCS 6000 conference equipment.**

**Danish Interpretation Systems A/S**

Vestre Teglgade 12  
DK-2450 Copenhagen SV  
Tel. +45 33 85 40 40  
Fax +45 33 85 40 41  
[info@dis.cc](mailto:info@dis.cc)  
[www.dis.cc](http://www.dis.cc)

**Danish Interpretation Systems (Thailand) Ltd.**

1497 Soi Latphrao 94 (Town in town 3/2)  
Latphrao Rd., Wongtonglang  
Bangkok 10310  
Tel. +662 559 3420  
Fax +662 559 3424  
[bangkok@dis.cc](mailto:bangkok@dis.cc)

**DIS, Middle East**

LOB 15; Office 221  
Jebel-Ali Free Zone  
P.O. Box 17343  
UAE  
Tel. +971 4 88 71 915  
Fax +971 4 88 71 897  
[dubai@dis.cc](mailto:dubai@dis.cc)

Dealer:



**Danish Interpretation Systems**

Top Level Conference Solutions



## DCS 6000 Digital Conference System

2. version - GBC/Handling

# The Floor Conference Discussion



The Digital Conference System, DCS 6000 system is designed specifically for conference discussion, voting and simultaneous interpretation purposes. In addition to providing a sound reinforcement system for the users it can be set up to manage discussion sessions, voting sessions and simultaneous interpretation in different operating modes depending on the requirements of the users.

DIS has created the best technical opportunities for the interpreters, the chairmen and the delegates - regardless of origin to be able to listen, talk, vote, and understand each other and to derive full profit from the conference. Our solutions - simple or advanced - make it much easier for the delegates to keep up the dialogue.

## All digital

The DCS 6000 system is a fully digital conference system based on an innovative technology and the first system in the market to handle up to 8 active microphones plus 32 different language channels simultaneously.



The solution is based on a powerful central unit, CU 6010. The CU 6010 includes both power supply for connected DCS 6000 units and basic system control features. With some extension units the total capacity of the DCS 6000 system may be enhanced for up to 4000 microphones, voting units and interpreter sets and an unlimited number of channel selectors

All DCS 6000 system components are connected in the DCS-LAN with standard, thin and flexible Cat. 5 cables to facilitate the installation and maintenance. In the basic configuration the units are connected in a single chain from 4 outputs of the CU 6010. To enhance redundancy and to enlarge the DCS-LAN, adding extension units will branch out the chains. This enables the possibility of replacing conference units and interpreter sets in use without interrupting the system.

## User-friendliness

Although this system is the most advanced DIS system ever, the renowned DIS philosophy reaching optimum performance with a minimum of skilled efforts also apply for the DCS 6000 system. Just connect the DCS 6000 system components to the CU 6010, switch on the main power and you are ready to work. The DCS 6000 initialises and configures itself with pre-set parameters letting you work immediately.

For easy adjustment of system parameters a self-explanatory menu is provided through the LCD display of the CU 6010. With a few push buttons you may change the modes of operation, audio level settings, maximum number of speakers and request settings, number and name of languages, memory set-up and check the system performance. For more advanced use the DCS 6000 conference management software, SW 6000 enables extended control and enhanced features from a central PC or a PC client/server

network. The SW 6000 supports numerous screen languages, login procedures, delegate information, microphone, voting and interpretation management, room/hall selection, synoptic/mimic diagram, message/intercom, system administration, sound streaming, agenda handling, information display handling etc. The SW 6000 supports one screen for each delegate/chairman.

## Portable microphones

The DCS 6000 system offers microphone units, DM/CM 6000 series, in an attractive styling for the conference participants. The basic unit is designed for tabletop use and is available as a delegate (DM) or a chairman (CM) version.

The DM/CM 6010 is a microphone-only unit, whereas the DM/CM 6060/6070 version includes independent channel selectors for simultaneous interpretation purposes. The latter being an excellent option if two delegates - even of different nationalities - are to share one unit. The flexible part of the gooseneck microphone allows

the microphone to be moved around without moving the casing.

## Channel selectors

The DCS 6000 system also offers separate Channel Selectors - CS 6032. The channel selector includes an illuminated LCD display showing the selected channel, the sound level and mini jack connector for headphones.

The channel selector is programmable, as the default setting of the start-up volume level and channel number for each unit may be altered individually.



## Customised design

An ancient congress hall or a new built auditorium make different demands to the installation. DIS has specialized in meeting such demands.

The design of the conference units can be customised according to architectural requirements from the furniture with regard to colour, shape, size and material. The flush mount microphone panels can be equipped with a loudspeaker, fixed gooseneck microphones or XLR socket for hand-held microphones or detachable gooseneck microphones, and may integrate voting buttons, LCD display, channel selector or a card reader.

Both microphone versions (delegate or chairman) include a loudspeaker built into the slightly raised casing, a gooseneck microphone with a powerful red LED "active/non-active" light indication formed as a ring around the microphone and a "push-to-talk/request" button. The chairman version is equipped with a "delegate-off" (priority) button. The built-in loudspeaker is switched off when the microphone is activated.

# The Booth Simultaneous Interpretation



An interpreter requires a reliable and user-friendly system to minimise the risks of misinterpretation. The DCS 6000 system fulfils both of these requirements.

The unique digital communication bus of the DCS 6000 system – the DCS-LAN enables transmission of up to 32 channels for simultaneous interpretation with excellent sound quality. Up to 32 interpreter sets can be assigned for each language.

## Interpreters equipment

The Interpreter Set – the IS 6132 is a compact multi channel interpreter set

designed to provide all the facilities needed by an interpreter.

The ergonomic design of the IS 6132 Interpreter Set is a result of many years co-operation with experienced interpreters worldwide.

The Interpreter can easily monitor the languages that have been selected for the 4 incoming pre-sets and for the outgoing A and B languages. The actual relay status is clearly indicated in the display next to the language code.

The console furnishes connections for gooseneck microphones, head-

phones, headsets and optional table-top loudspeakers. The LoudSpeaker, LS 6032 enables the floor sound to be monitored without use of headphones. The speaker sound is cut when one of the booth interpreter set is active.

## The best speech intelligibility

The signal transmitted between the DCS 6000 units is true digital, and the technique used provides the same listening level on all channels independent of the speech level of the individual interpreters. The Interpreter Set uses the same high quality microphones as the conference microphone units ensuring optimum audio quality regardless of the number of active channels. To provide the best speech intelligibility for the interpreters, the system features e.g. separate volume and bass/treble controls, intercom function, a "speaking too fast" button, and a "cough" button (muting).

## Reliability

The reliability of the DCS 6000 system is unparalleled. The DIS pro-



prietary digital technology with the well proved usage of standard Cat. 5 cabling provides a superior platform for a reliable and stable conference and simultaneous interpretation system. Adding the DCS 6000 remote network surveillance for active monitoring of the system status and performance ensures an unbeaten uptime.

Automatic termination built into each DCS 6000 system component prevents system break down if a cable is unplugged during a meeting.

## Audio connections

The CU 6010 furnishes standard analogue audio line input and line output for external devices such as telephone coupler, tape recorders, audio mixer console etc. as well as distribution of the original language through external PA systems.

If it is required to record or monitor some or all 32 channels or enable infrared language distribution, one or more AO 6008 Audio Output units - can be included in

the system. The AO 6008 unit provides 24-bit D/A conversion of 8 optional digital channels to 8 analogue output channels.

## The best sound quality available

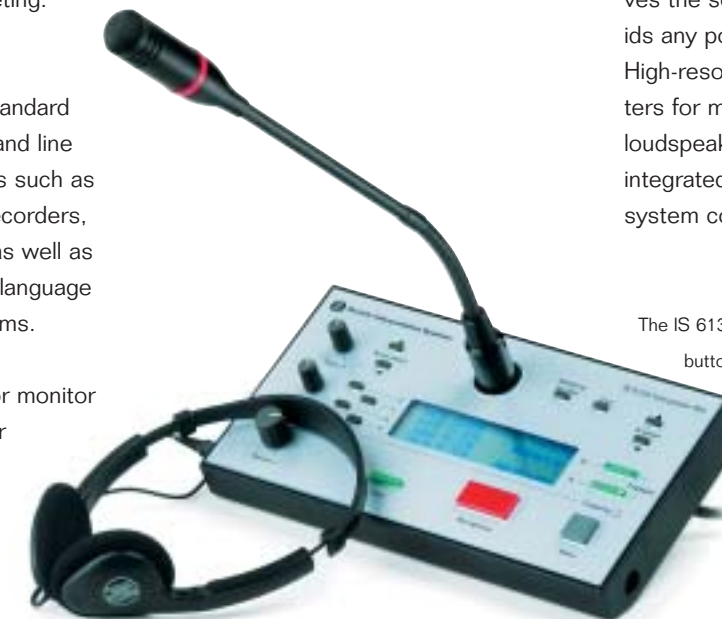
The DIS microphone provides maximum audio quality even in acoustically difficult rooms, regardless of how many microphones are open at the same time.

To obtain the best listening comfort each delegate may adjust the sound level individually.

The microphone capsule used is a high quality unidirectional condenser type, hung up in a double rubber suspension providing optimal acoustic isolation. This prevents mechanical noise from the table - such as finger tapping or paper crushing to be picked up.

All microphones include digital sound processing, which dynamically improves the sound level and virtually avoids any potential acoustic feedback. High-resolution A/D and D/A converters for microphone capsules and loudspeaker units of high quality are integrated locally in the DCS 6000 system components.

The IS 6132 has 4 direct accessible pre-select buttons for incoming channels in addition to the original floor language and 2 pre-select buttons for the outgoing channels (A and B). A large illuminated LCD display with 4 lines provides clear information about the actual setting.



# System Components **DCS 6000**

## Central equipment



**CU 6010**  
Central Unit for Interpretation and Delegate Microphone Control



**EX 6010**  
Extension Unit with power supply and repeater



**AO 6008**  
8 channels analogue audio output unit



**JB 6002** Junction Box for connecting one unit to each of the 2 output connectors



**JB 6004** Junction box for connecting one unit to each of the 4 output connectors

**RP 6004**  
Repeater for in/outgoing bus

## Delegate/Chairman equipment



**DM 6010P**  
Delegate unit with built in speaker and fixed gooseneck microphone



**CM 6010P**  
Chairman unit with built in speaker and fixed gooseneck microphone



**MU 6040**  
Microphone Unit for connection of external microphone/buttons/speaker. Delegate and chairman versions



**DM 6070P**  
Delegate unit with built in speaker and 2 channel selectors



**DM 6090P**  
Delegate unit with built in speaker, 2 channel selectors and XLR



**CA 6000**  
Connection cable, STP Cat. 5 black, various lengths

# System Components **DCS 6000**

## Interpreter equipment



**IS 6132**  
Interpreter set for up to 32 channels



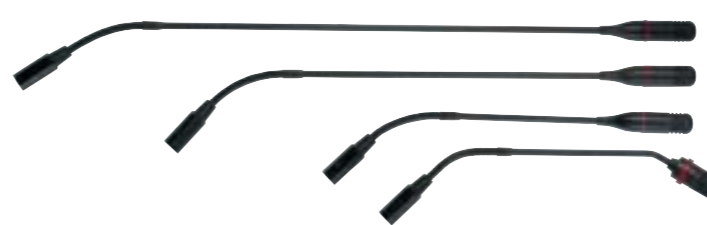
**DH 9001 H**  
Interpreter headphone



**IH 6000**  
Interpreter headset



**LS 6032**  
Loudspeaker

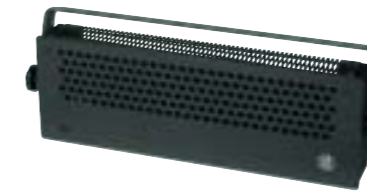


**GM 4425**  
**GM 4424**  
**GM 4422**  
**GM 4022**  
Gooseneck microphone, 36, 50 and 63 cm

## Language distribution equipment



**IT 6108**  
8 channels infrared transmitter



**RA 15-10**  
10W Infrared radiator



**RA 15-30**  
30W Infrared radiator



**IR 15-6B**  
**IR 15-12B**  
**IR 15-16B**  
Infrared receiver, 6, 12 or 16 channels



**DH 8003 H**  
Stetoscopic headphone

**DH 9001 H**  
Delegate headphone



**CS 6032F**  
Channel selector, flush mounted



**CS 6032F**  
Channel selector, flush mounted

